



2024 MOUNTING SOLUTIONS



**Field Service · Healthcare · Manufacturing · Retail · Transportation · Warehouse**

National Products, Inc. | RAM® Mounts

SEEN IN THIS PHOTO:

**RAM-101U-247**

RAM® Universal Post Clamp Mount with Round Plate - C Size Medium Arm

**RAM-HOL-TAB12U**

RAM® Tab-Tite™ Universal Spring Loaded Holder for 8" Tablets with Case

**RAM-HOL-TAB-RISER1U**

RAM® 1/2" Risers for RAM® Tab-Tite™ and RAM® Tab-Lock™ Holders

# The Industry Standard

For over 30 years, National Products, Inc. has supplied the most rugged and connective mobile device mounting systems on the planet. With the globally recognized RAM® Mounts and award-winning GDS® Tech™ product lines, NPI's mission is to bring world-class mounting solutions to real-world applications in all industries—we are the industry standard.

SEEN IN THIS PHOTO:

**RAM-234-3FL**

RAM® Tough-Tray™ Spring Loaded Laptop Holder with Flat Retaining Arms

**RAM-VB-195-SW2**

RAM® No-Drill™ Mount for '15-23 Ford F-150, '17-23 F-250 + More

**RAM-234-5U**

RAM® Power Caddy™ Accessory Holder for RAM® Tough-Tray™

**RAM-234-S2U**

RAM® Adjustable Laptop Screen Support Arm

SEEN IN THIS PHOTO:

**RAM-D-2461U-C-247-4**  
RAM® 4" Square Post Clamp  
Mount with 75x75mm VESA Plate

**RAM-HOL-GE4PD2KLU**  
RAM® Locking Power + Dual  
USB Data Dock for Getac ZX10

# Contents

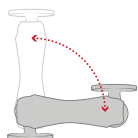
- 4 | About RAM® Mounts
- 6 | ZX80 **NEW**
- 8 | ZX70
- 10 | ZX10
- 12 | Accessories & Add-ons
- 14 | RAM® Tab-Tite™ & Tab-Lock™
- 16 | Compatible Mounts
- 18 | Laptop Mounts



# About RAM® Mounts

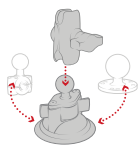
RAM® Mounts manufactures rugged and versatile mounting systems for phones, tablets, and other mobile devices that can be attached nearly anywhere. Unlike other mounts on the market, RAM® allows you to secure devices where you need them most. The unique design of the RAM® Mounts system provides quick installation, adjustability, strength, vibration damping, and durability—all at a low cost. Backed by a lifetime warranty, RAM® uses powder-coated, marine-grade aluminum with lightweight and high-strength composites, stainless steel hardware, and rubber balls.

## The RAM® Difference



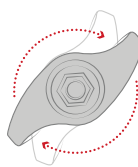
### Premium Design

The rubber ball and socket design of our mounting systems offers a secure hold, with near-infinite adjustability and vibration damping for the most demanding environments. With thousands of components trusted by users around the world, we've been able to design and develop mounting solutions that consumers and companies previously only dreamed were possible.



### Customizable

Take your phone mount from your truck to your boat, or mix and match components to create your ideal mount. Because of the modularity of the RAM® system, you can customize your solution to fit your specific needs in almost any application.



### Quality Materials

A premium design deserves the highest quality materials available, from rubber and stainless steel to high-strength composites and marine-grade aluminum. Our facilities— including powder coating, die casting, rubber injection molding, and shock and vibration testing—help us deliver on this promise to bring you inventive mounting solutions.



### Lifetime Warranty

It's simple. Our reputation as the leader of premier mounting systems means if we build it, then we guarantee it. We're confident in the quality of our products, and with our warranty, you can be too.

\*1-3 year warranty on electronics, including powered docks

## National Products Inc. (NPI)

Introduced in 1990, National Products Inc. (NPI) quickly became the leading manufacturer of rugged and versatile mounting solutions. RAM® Mounts has grown to offer approximately 5,000 modular components—the most innovative product line of its kind for nearly any application and device, including phones, tablets, GPS systems, laptops, marine electronics, printers, radios, and much more.

In addition to RAM® Mounts, NPI is also the creator of award-winning IntelliSkin® sleeves and GDS® Technology™ products. IntelliSkin® sleeves ruggedize a wide range of consumer phones and tablets, while the GDS® Ecosystem™ provides users the ability to securely charge, dock, and sync devices in the most demanding environments.

NPI is proudly located in Seattle, Washington in the same neighborhood where the company was started.

## Partner with RAM® Mounts

Here at RAM® Mounts, we believe that unfathomable things are possible with ingenuity. With a portfolio of more than 5,000 SKUs paired with innovative engineers and in-house product experts, we have the tools and expertise needed to create solutions that you didn't know were possible. We have the ability to solve your mounting challenges quickly, efficiently, and cost effectively.



**SEEN IN THIS PHOTO:**

**RAM-HOL-GE5PU**

RAM® Form-Fit Powered Dock for Getac ZX80

**RAM-D-2461U-C-247-4**

RAM® 4" Square Post Clamp Mount with 75x75mm VESA Plate

**TOUGH-DOCKS™**

# RAM® Tough-Dock™ for Getac ZX80

Tackle the workday and stay connected in the field with RAM® Mounts form-fit docks built to enable Getac's ZX80 rugged tablet. The RAM® Tough-Docks™ support a custom-tailored approach when identifying your ideal mounting solution, with the following optional features—power, key-locking, and single or dual peripheral support. Pair it with any modular RAM® Mounts components to secure your device anywhere, including forklifts, trucks, workstations, and more.



Getac ZX80					
PART NUMBER	⚡ Power	🔒 Key Locking	🔓 Non-locking	🔌 Single USB Peripheral	🔌🔌 Dual USB Peripheral
RAM-HOL-GE5U			•		
RAM-HOL-GE5KLU		•			
RAM-HOL-GE5PU	•		•		
RAM-HOL-GE5PKLU	•	•			
RAM-HOL-GE5PDU	•		•	•	
RAM-HOL-GE5PDKLU	•	•		•	
RAM-HOL-GE5PD2U	•		•		•
RAM-HOL-GE5PD2KLU	•	•			•

## Features



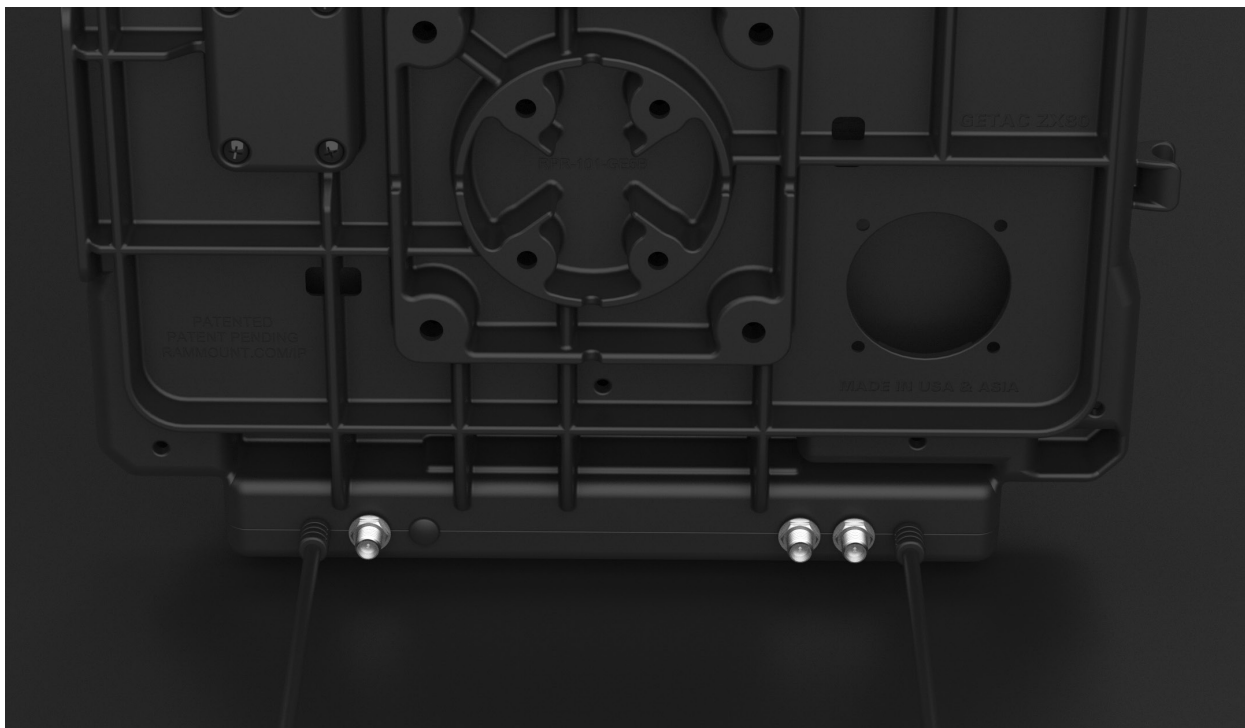
### ADD-ON MOUNTING

Attachable side bracket for cable management and mounting small devices such as scanners, phones, printers, and more.



### SEAMLESS CONNECTIVITY

Pogo pins align with the device's pogo pads for a seamless charging experience, while two larger ground pins provide a return path for the electrical current and ensure proper alignment when docking the ZX80.



### RF PASS-THROUGH




Upgradable expansion slots for Hirose RF antenna pass-through supports GPS, WWAN and WLAN.

**TOUGH-DOCKS™**

# RAM® Tough-Dock™ Series for Getac ZX70

Built to compliment the Getac ZX70's "rugged to the core" design, the RAM® Tough-Dock™ includes model-dependent compatibility with two accessories intended to increase the versatility and efficiency of your tablets—the RAM® NFC Extender and the RAM® Temperature Control accessories. Opt for a key-locking model for additional theft deterrence in the field.



Getac ZX70			
PART NUMBER	 NFC Compatible	 Temperature Regulating	 Key Locking
RAM-HOL-GE3NU	•		
RAM-HOL-GE3NKLU	•		•
RAM-HOL-GE3FU		•	
RAM-HOL-GE3FKLU		•	•





**SEEN IN THIS PHOTO:**

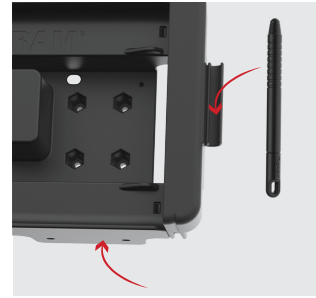
**RAM-HOL-GE3NKLU**

RAM® Form-Fit Locking Holder for Getac ZX70 - NFC Extender Compatible

**RAM-101U-247**

RAM® Universal Post Clamp Mount with Round Plate - C Size Medium Arm

**Features**



**STYLUS PEN + ACCESSORY BRACKET COMPATIBLE**

Integrated Stylus holder and 2-Hole AMPS add-on bracket for accessory or peripheral device mounting.



**GDS® CHARGER**

Maintain a consistent power connection to your fleet of devices with the GDS® Modular Hardwire Charger.



**Add-on Accessories**



**RAM-GDS-CHARGE-V9U**

GDS® 20-60VDC Input (12VDC Output) Hardwire Charger with Male DC 5.5mm



**RAM-GDS-CHARGE-V10U**

GDS® 10-32VDC Input (12VDC Output) Hardwire Charger with Male DC 5.5mm

**SEE PG.17 FOR COMPATIBLE MOUNTS**



TOUGH-DOCKS™

# RAM® Tough-Dock™ Series for Getac ZX10

Tackle the workday and stay connected in the field with RAM® Mounts form-fit docks built to enable Getac's ZX10 rugged tablet. The RAM® Tough-Docks™ support a custom-tailored approach when identifying your ideal mounting solution, with the following optional features—power, key-locking, and single or dual peripheral support. Pair it with any modular RAM® Mounts components to secure your device anywhere, including forklifts, trucks, workstations, and more.



Getac ZX10					
PART NUMBER	⚡ Power	🔒 Key Locking	🔓 Non-locking	🔌 Single USB Peripheral	🔌🔌 Dual USB Peripheral
RAM-HOL-GE4U		•	•		
RAM-HOL-GE4KLU		•			
RAM-HOL-GE4PU	•		•		
RAM-HOL-GE4PKLU	•	•			
RAM-HOL-GE4PDU	•		•	•	
RAM-HOL-GE4PDKLU	•	•		•	
RAM-HOL-GE4PD2U	•		•		•
RAM-HOL-GE4PD2KLU	•	•			•



**SEEN IN THIS PHOTO:**

**RAM-HOL-GE4PD2KLU**  
RAM® Locking Power + Dual  
USB Data Dock for Getac ZX10

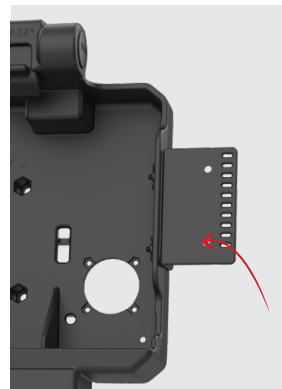
**RAM-D-2461U-C-247-4**  
RAM® 4" Square Post Clamp  
Mount with 75x75mm VESA Plate

## Features



### POGO PINS

Protects device ports from constant plugging and unplugging.



### 2-HOLE AMPS ACCESSORY ADD-ON BRACKET

Includes a 2-Hole AMPS add-on bracket for accessory or peripheral device mounting such as a phone or scanner.



**LIFETIME  
WARRANTY**

Mounting  
Components



**3  
YEAR  
WARRANTY**

Electronics

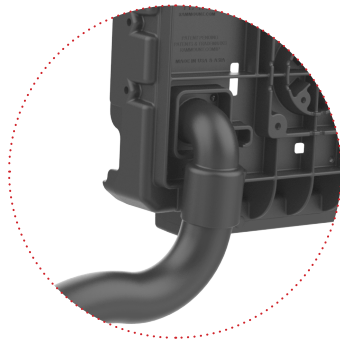
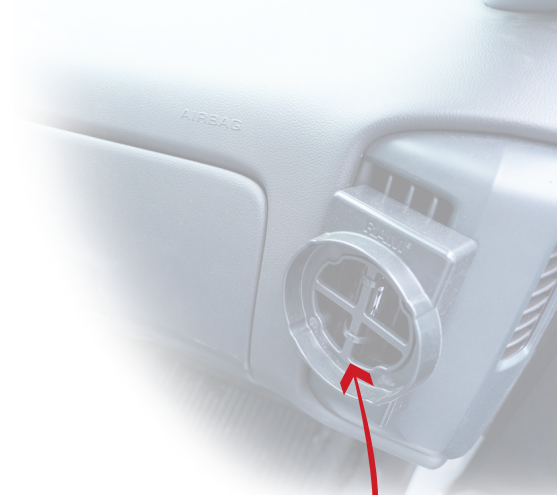
**SEE PG.16  
FOR COMPATIBLE  
MOUNTS**



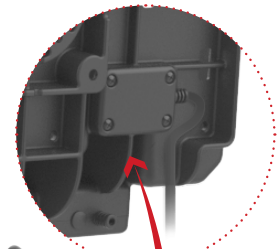
ACCESSORIES & ADD-ONS

# Accessories & Add-ons

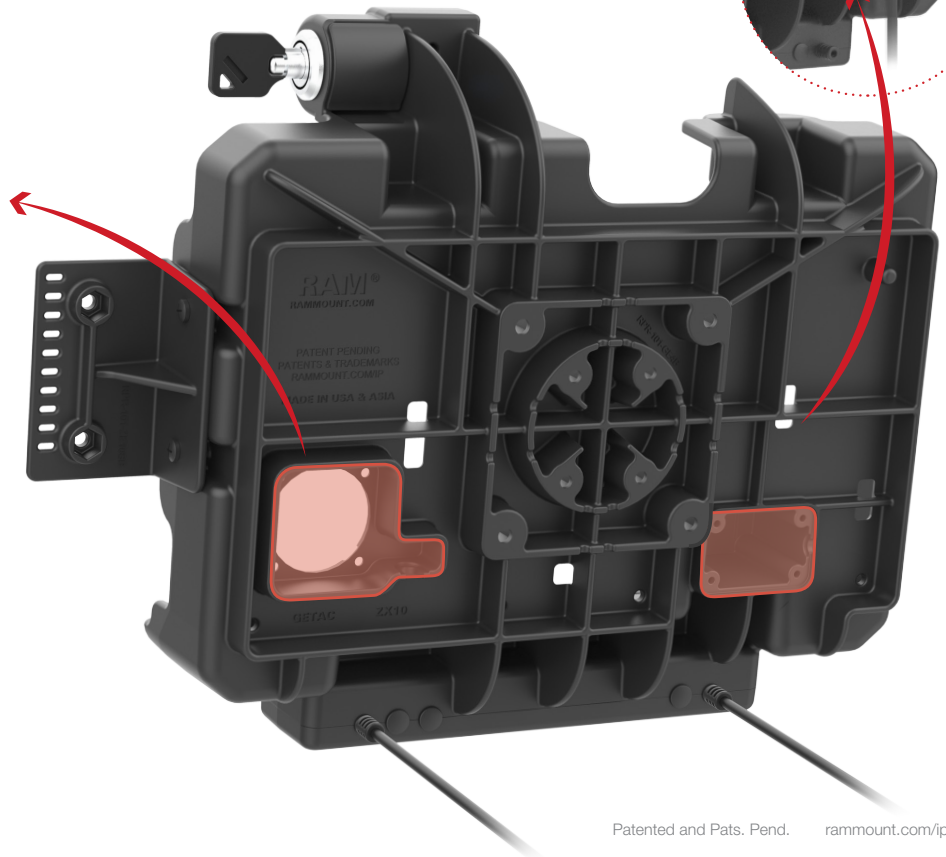
Located on the back of your dock are designated housings for optional accessories intended to support your tablet in extreme weather conditions and decrease the number of docking and un-docking experiences necessitated by your workflow. Explore the RAM® temperature control accessories and NFC Extender.



Supports RAM® Vent-Temp™ and Temp-Right™ Connections



Supports RAM® NFC Extender



## RAM® NFC Extender Add-on



SEEN IN THIS PHOTO:

**RAM-B-102-NFCU**  
RAM® NFC Extender  
with Drill-Down Double  
Ball Mount



**RAM-GDS-CAB-NFCU**  
RAM® NFC Extender



**RAM-B-102-NFCU**  
RAM® NFC Extender  
with Drill-Down Double Ball Mount

## Temperature Add-ons



**RAM-VENT1-RND-50U**  
RAM® Vent-Temp™ with Back Dock  
Connection for Round Vents



**RAM-VENT1-RCT-50U**  
RAM® Vent-Temp™ with Back Dock  
Connection for Rectangular Vents



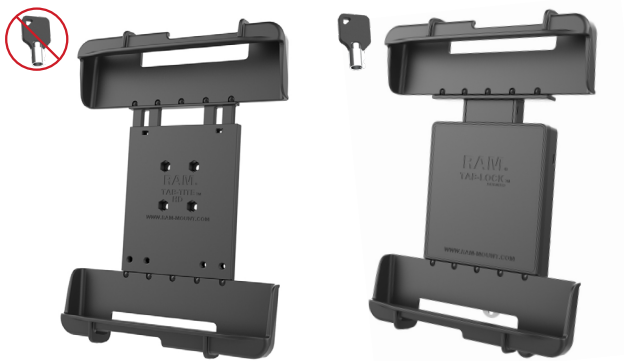
**TEMP-RIGHT**  
RAM® Temp-Right™  
Dock Heating Module

# RAM® Tab-Tite™ & Tab-Lock™ Holders

The RAM® Tab-Tite™ & Tab-Lock™ are rugged, universal tablet holders that are available in locking and non-locking options, can support tablets with or without a case, and can be mounted virtually anywhere. The spring-loaded design makes it easy to insert and remove your tablet while keeping it secure. The RAM® Tab-Tite™ & Tab-Lock™ product lines are future-proof—simply modify the holder.



## Tab-Tite™ & Tab-Lock™ for ZX10



**RAM-HOL-TAB19U**  
RAM® Tab-Tite™ Holder

**RAM-HOL-TABL19U**  
RAM® Tab-Lock™ Holder

## Tab-Tite™ & Tab-Lock™ for UX10



**RAM-HOL-TAB34U**  
RAM® Tab-Tite™ Holder

**RAM-HOL-TABL34U**  
RAM® Tab-Lock-Tite™ Holder

Access to Thunderbolt port is blocked while in holder. This holder is not compatible with the extended battery or carrying handle for the UX10.

Risers are required

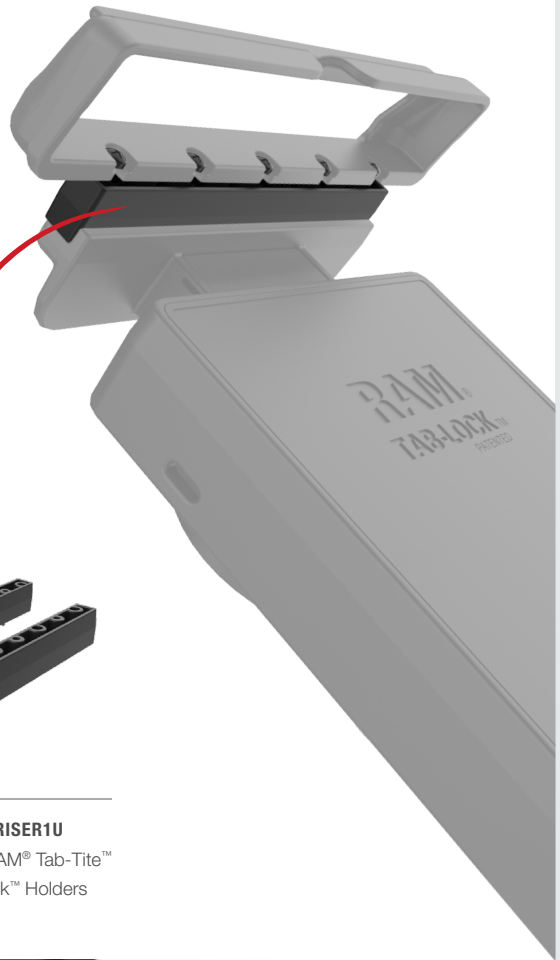
## Tab-Tite™ & Tab-Lock™ for ZX70



**RAM-HOL-TAB12U**  
RAM® Tab-Tite™ Holder



**RAM-HOL-TABL12U**  
RAM® Tab-Lock™ Holder



**RAM-HOL-TAB-RISER1U**  
RAM® 1/2" Risers for RAM® Tab-Tite™  
and RAM® Tab-Lock™ Holders

**Risers are required** to secure your Getac ZX70 device in either the RAM® Tab-Tite™ or RAM® Tab-Lock™

### SEEN IN THIS PHOTO:

#### **RAM-101U-247**

RAM® Universal Post Clamp Mount with Round Plate - C Size Medium Arm

#### **RAM-HOL-TAB12U**

RAM® Tab-Tite™ Universal Spring Loaded Holder for 8" Tablets with Case

#### **RAM-HOL-TAB-RISER1U**

RAM® 1/2" Risers for RAM® Tab-Tite™ and RAM® Tab-Lock™ Holders

**SEE PG.16  
FOR COMPATIBLE  
MOUNTS**





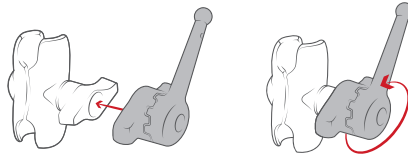
## Compatible Mounts for ZX10

For ZX10 Docks, C Size 2.25" Ball Mounts Recommended for Light-Duty Mounting (Vehicle & Static Environments) and D Size 2.25" Ball Mounts Recommended for Heavy-Duty Mounting (Forklifts & Rugged Environments)



**RAM-D-101U-246**

RAM® Double Ball Mount with 100x100mm VESA Plate - D Size Medium



This wrench (RAM-KNOB9HU) provides the **extra leverage** needed to tighten the mount in cold weather or in small spaces.



**BEST FOR VEHICLES**

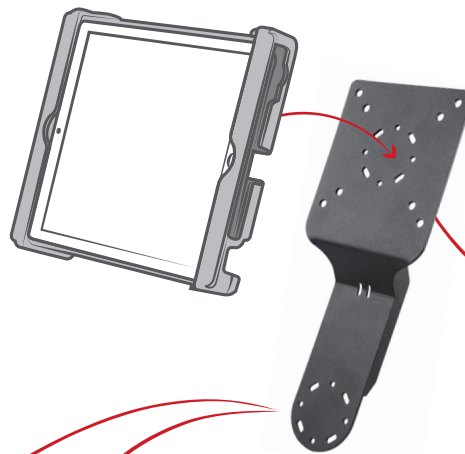
**RAM-VP-89F-D-101-2461U**

RAM® Tele-Pole™ with 8" & 9" Poles and 75mm VESA Mount

## ZX10 Accessory Highlight: Mobile Office

RAM® Mounts are designed with modularity in mind to provide an efficient workflow for workers on-the-go. Consider including a keyboard in your next deployment to enable faster data input while seamlessly integrating your mounting solution with the RAM® Heavy Duty Accessory Display Bracket.

**Note:** You have to select a RAM® Tough-Dock™ with peripheral support in order for keyboard connection to work



**BEST FOR FORKLIFTS**

**RAM-DIS-103-2AU**

RAM® Standard Heavy Duty Accessory/Display Bracket



**RAM-D-2461U-C-247-4**

RAM® 4" Square Post Clamp Mount with 75x75mm VESA Plate

**OR**



**RAM-KB2-USB**

GDS® Keyboard™ with Track Pad



**RAM-KB4-USB**

GDS® Keyboard™ with 10-Key Numeric Pad





# Compatible Mounts for ZX70

For ZX70, Tab-Tite™ & Tab-Lock™ Products, C Size 1.5" Ball Mounts Recommended

**BEST FOR VEHICLES**



### RAM-101-B-225B2U

RAM® Drill-Down Dashboard Mount with Backing Plate - C Size Short



### RAP-401-202U

RAM® Tough-Claw™ Large Clamp Double Ball Mount with Round Plate



### RAM-101U

RAM® Double Ball Mount with Two Round Plates - C Size Medium

**BEST FOR FORKLIFTS**



### RAM-101U-247

RAM® Universal Post Clamp Mount with Round Plate - C Size Medium Arm



### RAP-365-101U

RAM® Twist-Lock™ Triple Suction Cup Mount with Round Plate

The articulating swing arm, lower mount, and flange pole base **allow for full 360-degree rotation and additional RAM® socket arm for ideal placement** of multiple devices such as a keyboard + tablet.



### RAM-VP-SW2F-89

RAM® Tele-Pole™ with 8" & 9" Poles and Double Ball Mount



#### SEEN IN THIS PHOTO:

##### RAM-101U-247

RAM® Universal Post Clamp Mount with Round Plate - C Size Medium Arm

##### RAM-HOL-TAB12U

RAM® Tab-Tite™ Universal Spring Loaded Holder for 8" Tablets with Case

##### RAM-HOL-TAB-RISER1U

RAM® 1/2" Risers for RAM® Tab-Tite™ and RAM® Tab-Lock™ Holders

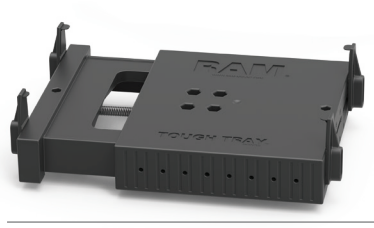
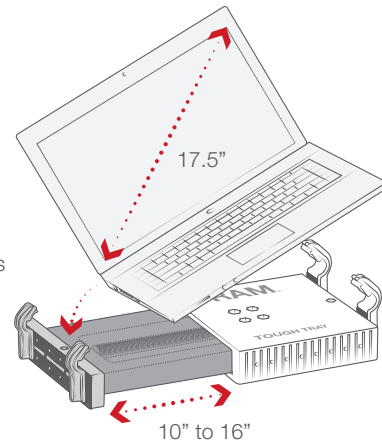


# RAM® Tough-Tray™ for Rugged Laptops

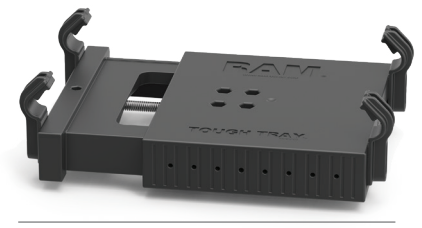
The RAM® Tough-Tray™ is a spring-loaded expandable tray that can accommodate up to 17.5" Laptops. Four-sided clamping arms with rubber grips can be moved both vertically and horizontally, allowing for a custom fit for varying sizes of laptops and the freedom of not blocking ports or drives.

The famous RAM® No-Drill™ design adapts to the passenger side front seat bolts of your vehicle, with adjustable Tele-Pole™ & Swing Arm components to support your laptop in a position that is easily accessible to the driver, leaves room for the passenger, and does not interfere with airbag deployment. In addition, the ball and socket system at the end of the swing arms allow you to angle your laptop for optimal wrist comfort.

Spring-loaded universal laptop tray accommodates up to 17.5" laptops



**RAM-234-3FL**  
RAM® Tough-Tray™ Spring Loaded Laptop Holder with Flat Retaining Arms



**RAM-234-3**  
RAM® Tough-Tray™ Spring Loaded Laptop Holder



SEEN IN THIS PHOTO:

**RAM-VB-195-SW1**  
RAM® No-Drill™ Laptop Mount for '17-24 Ford F-Series + More



**BEST SELLER**

**RAM-VB-195-SW1**

RAM® No-Drill™ Laptop Mount for '17-24 Ford F-Series + More



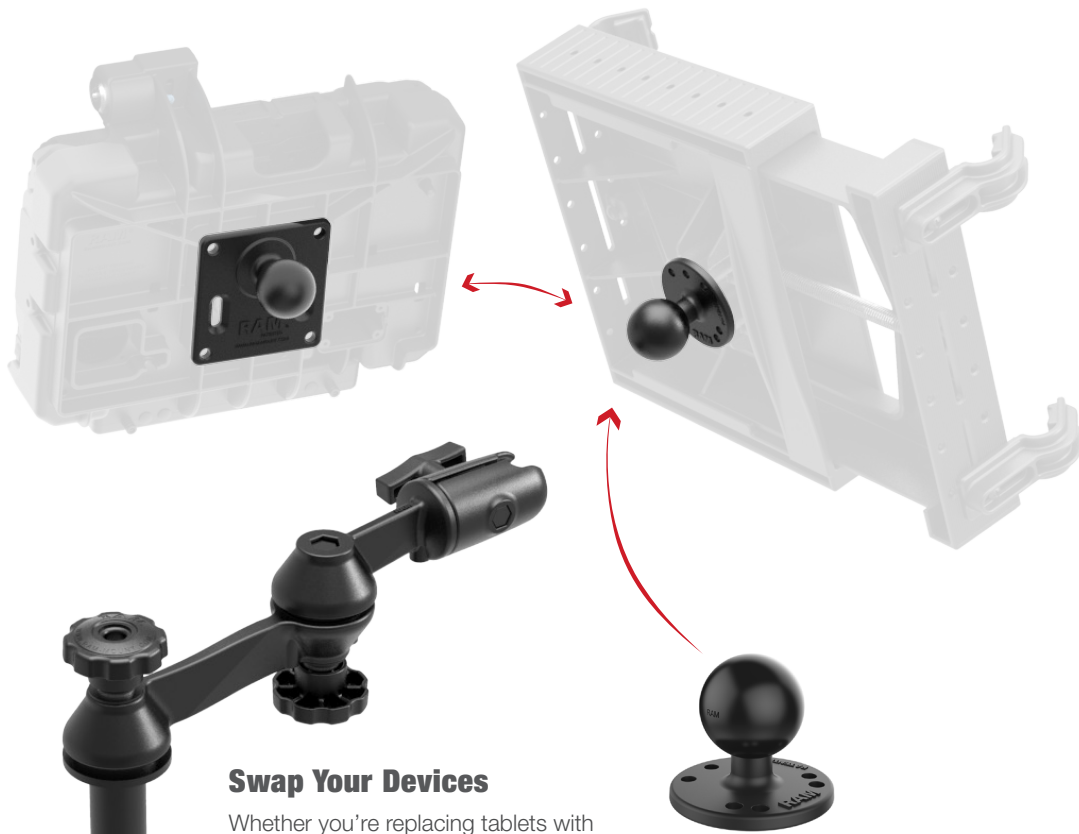
**RAM-VB-178A-SW1**

RAM® No-Drill™ Laptop Mount for '12-24 RAM 2500-5500 + More



**RAM-VB-203-SW1**

RAM® No-Drill™ Laptop Mount for '19-24 Chevrolet Silverado + More



**Swap Your Devices**

Whether you're replacing tablets with laptops or vice versa, the RAM® Mounts future-proofed ecosystem allows you to swap out your device holder without replacing your entire mounting solution.



**RAM-202U**  
RAM® Round Plate with Ball - C Size



Mount Anything, Anywhere

Getac

rammount.com  
1.800.497.7479  
sales@rammount.com



GDS®, IntelliSkin®, GDS® Tech™, GDS® Technology™, GDS® Green™, Distinctive "Double Delta" Shape™, One Dock to Connect Them All™, GDS® Uni-Conn™, and GDS® Compatible™ are trademarks or registered trademarks of National Products Inc.

The distinctive D Shape™ of the GDS® connector is a trademark of National Products Inc.



RAM® double socket arms with their distinctive Hourglass Shape are recognized globally as a symbol of the reliability, quality, and durability of this line of products. The Hourglass Shape is a registered trademark of National Products Inc.



The distinctive RAM® "X-Grip®" product shape is a trademark of National Products Inc.



Look for the highly recognizable "Double Delta" trademark, the symbol of quality and reliability

**NATIONAL PRODUCTS INC. PRODUCTS DISCLAIMER & LEGAL INFO • RAMMOUNT.COM/IP**  
NEVER USE MOBILE COMPUTING OR COMMUNICATION EQUIPMENT WHILE A VEHICLE IS IN MOTION

RAM® Mounts are designed for dynamic mounting applications but are not intended to be used in excess of reasonable load limits. National Products Inc., maker of RAM® Mounts, expressly denies any liability for a product failure and assumes no responsibility for lost or damaged mounting systems. National Products Inc. assumes no liability for injuries or any other losses sustained while using these products. RAM® Mounts should not be used in such a manner as to distract the operator from the operation of vehicles or other devices, or to create any safety hazards.

D® product shape, "Hourglass" product shape, 3-D Float, Adapt-A-Post, Adapt-To-RAM, Add-A-Ball, Adjust-A-Pole, Always Protected, Always Connected, Aqua Box, Aqua-Box, Aqua-Base, D-Shape, Dock-N-Lock, Drop-N-Lock, EZ-On/Off, EZ-Roll'r, EZ-Strap, EZY-Mount, Finger-Grip, Flex-Arm, Flex-Base, Flex-Lens, Flex-Rod, GDS, GDS Audio, GDS Case, GDS Charge, GDS Compatible, GDS Cradle, GDS Cup, GDS Dock, GDS Ecosystem, GDS Ergo, GDS Green, GDS Hub, GDS Keyboard, GDS Service, GDS Skin, GDS Sleeve, GDS Tech, GDS Technology, GDS View, Go-Dock, Hand-Track, HandStand, Handi-Case, IntelliSkin, IntelliSkin Compatible, IntelliSkin HD, Just RAM It!, Latch-N-Lock, Level Cup, Level-Base, Light-Speed, LI Buddy, MDT-Mate, Mari-Nut, Mari-Rivet, Mighty-Buddy, Mirror-Mate, Multi-Pad, No-Drill, Power Caddy, Power Pats, Power-Grip, Press-N-Lock, Quick Snap, Quick-Draw, Quick-Grip, RAM, RAM "X-Grip" product shape, RAM Bow-Cam, RAM Compatible, RAM Mount, RAM Mounting Systems, RAM Mounts, RAM Mounts Compatible, RAM Pin-Lock, RAM Pod, RAM Pod HD, RAM ROD, RAM Ratchet, RAM Ratchet Arm, RAM Ratchet Swing Arm, RAM Tube, RAM Tube Jr, RAM X-Grip, RAM-A-CAN, RAM-A-SNACK, Remove-A-Pole, Roller-Ball, Roto-View, Round-A-Mount, Safe-N-Secure, Safe-T-Charge, Seat Mate, Seat-Mate, Secure-N-Motion, Shock Buster, Slide Dock, Slide-N-Lock, Snap-On, Snap-Link, Stack-N-Stow, Stubby, Tab-Lock, Tab-Tite, Team RAM, Tele-Mount, Tele-Pole, Tilt-N-Turn, Torque, Torque-Track, Tough-Ball, Tough-Box, Tough-Clamp, Tough-Claw, Tough-Cleat, Tough-Clip, Tough-Dock, Tough-Hub, Tough-Pole, Tough-Tap, Tough-Track, Tough-Tray, Tough-Tube, Tough-Wedge, Track Ball, Track-Node, Twist-Lock, Twist-N-Tilt, Twist-N-Turn, Uni-Conn, Wedge-Lock, Your Best Connection, are either registered trademarks or trademarks of National Products Inc. in the United States and or other countries.