


Getac

Rugged Mobile Computing Solutions

NATURAL RESOURCES

**RUGGED COMPUTING THAT BOOSTS YOUR PRODUCTIVITY
AND DRIVES EFFICIENCY**

 Windows 11

Getac recommends Windows 11 Pro for business

FIELD SERVICE / FACILITY MANAGEMENT

INSPECTION SAFETY CHECK

Devices are able to thrive in high pressure environments and Wifi is used to enable data to be transferred in real-time.

MINING SAFETY

Designed for use in hazardous and explosive environments, certified with ATEX/IECEX Zone 2/22.

GIS DATA COLLECTION

Dedicated GPS, even without connection, allowing fast location positioning, accuracy and search capacity.

Tablets:

- ♦ ZX80 (8")
- ♦ ZX10 (10.1")
- ♦ ZX10-EX (10.1")
- ♦ UX10 (10.1")
- ♦ UX10-EX (10.1")
- ♦ F110 (11.6")
- ♦ F110-EX (11.6")
- ♦ K120 (12.5")
- ♦ K120-EX (12.5")
- ♦ A140 (14")

Laptops:

- ♦ V110 (11.6")
- ♦ B360 (13.3")
- ♦ S410 (14")
- ♦ S510 (15.6")
- ♦ X600 (15.6")

Accessories:

- ♦ Carrying Solutions
- ♦ Charging Solutions
- ♦ Docking Solutions
- ♦ Routers & Antennas
- ♦ Keyboards

Software:

- ♦ Getac Management
- ♦ Getac Monitoring
- ♦ Getac OEMConfig
- ♦ Getac KeyWedgeⁱ
- ♦ Getac Driving Safety
- ♦ Getac Virtual-GPS
- ♦ Absolute

GETAC S510
3D EXPERIENCE



GETAC UX10
3D EXPERIENCE



4G
LTE



WAREHOUSING / MATERIALS HANDLING

Getac's demountable solutions with barcode scanning capability are ideal for inventory management, shipping, picking/packing, loading and unloading supplies.

Tablets:

- ♦ ZX80 (8")
- ♦ ZX10 (10.1")
- ♦ UX10 (10.1")
- ♦ F110 (11.6")
- ♦ A140 (14")

Accessories:

- ♦ Carrying Solutions
- ♦ Charging Solutions
- ♦ Docking Solutions
- ♦ Keyboards

Software:

- ♦ Getac Management
- ♦ Getac Monitoring
- ♦ Getac OEMConfig
- ♦ Getac Driving Safety
- ♦ Absolute



ⁱ Only available for devices with rear-facing camera.

CONSTRUCTON SITE

Devices are used for tracking material deliveries, modifying design plans and drawings, or monitoring safety compliance on-site. The devices are built to withstand drops from heights, endure vibrations, and operate in extreme temperatures, as well as in wet or dusty environments.

Tablets:

- ZX80 (8")
- ZX10 (10.1")
- UX10 (10.1")
- F110 (11.6")

Laptops:

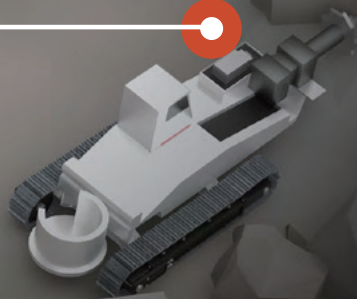
- V110 (11.6")
- S410 (14")
- S510 (15.6")

Accessories:

- Carrying Solutions
- Charging Solutions
- Docking Solutions
- Keyboards

Software:

- Getac Management
- Getac Monitoring
- Getac OEMConfig
- Getac KeyWedge¹
- Getac Driving Safety
- Getac Virtual-GPS
- Absolute



¹ Only available for devices with rear-facing camera.

TRANSPORT / IN-CAB

TRANSPORTATION

Devices enable access to driver records, vehicle diagnostics, load management and allow this data as well as geolocation to be tracked and transmitted to the head office.

FLEET MANAGEMENT & MAINTENANCE

Automation of refueling and maintenance related procedures for mining hauls and vehicles. These routine fleet inspections minimise downtime.

Tablets:

- ◆ ZX80 (8")
- ◆ ZX10 (10.1")
- ◆ F110 (11.6")

Accessories:

- ◆ Charging Solutions
- ◆ Docking Solutions
- ◆ Routers & Antennas

Software:

- ◆ Getac Management
- ◆ Getac Monitoring
- ◆ Getac OEMConfig
- ◆ Getac KeyWedge
- ◆ Getac Driving Safety
- ◆ Getac Virtual-GPS
- ◆ Absolute

GETAC F110
3D EXPERIENCE



PLANNING & SURVEYING

Data is able to be collected from surveys and GIS mapping in extreme weather conditions. The devices perform in sunlight and rain and even whilst wearing gloves.

Tablets:

- ◆ ZX80 (8")
- ◆ ZX10 (10.1")
- ◆ UX10 (10.1")
- ◆ F110 (11.6")

Accessories:

- ◆ Carrying Solutions
- ◆ Charging Solutions

Software:

- ◆ Getac Management
- ◆ Getac Monitoring
- ◆ Getac OEMConfig
- ◆ Absolute

GETAC ZX80
3D EXPERIENCE





CARRYING SOLUTIONS

1. Shoulder Strap (2-point)
2. Shoulder Harness (4-point/handsfree)
3. Hand Strap
4. X Strap
5. Rotating Hand Strap with Kickstand
6. Wrist Strap
7. Hard Handle
8. Carry Bag

KEYBOARDS

- ◆ Rugged Keyboard
- ◆ Detachable Keyboard

DOCKING SOLUTIONS

- ◆ Vehicle Dock
- ◆ Office Dock
- ◆ Keyboard Dock
- ◆ Vehicle Pouch
- ◆ Mounting Bracket

CHARGING SOLUTIONS

- ◆ Vehicle Adapter
- ◆ AC Adapter
- ◆ Isolated Forklift Adapter
- ◆ Multi-Bay Charger (dual, six, eight)
- ◆ Spare Batteries
- ◆ Extended Batteries

CERTIFICATIONS

Rigorous third-party testing helps Getac solutions meet high standards of ruggedness and reliability, providing you with technology that works where you do:

- ◆ Military Standard (MIL-STD) certified solutions: MIL-STD-810H, MIL-STD-461G
- ◆ IP Certified dust and moisture resistant laptops and tablets: IP53, IP65, IP66, IP67
- ◆ ATEX Certification*: ATEX / IECEx Zone 2/22
- ◆ ANSI Certification
- ◆ Salt Fog Certification

*Certifications vary according to models.



GETAC SOFTWARE



Getac Management

A Cloud-based configuration and management solution that brings scalability, precision, and over-the-air convenience to Getac Android ownership.



Getac Monitoring

Monitoring helps you know which devices are optimally working, and which are not, ensuring you have the technology you need when you need it.



Getac DEMConfig

Supporting a range of enterprise mobility management (EMM) platforms, unlocking the full potential of your Getac Android devices and packed with essential device controls.



Getac KeyWedge

Scan barcode data into your applications with the device's in-built rear camera.



Getac Driving Safety

Your people are your most valuable assets. Workforce Safety for Commercial Vehicles and Forklifts with our Driving Safety App.



Getac Virtual-GPS

Replicating physical GPS data to multiple virtual COM ports to increase operational efficiency.

THIRD-PARTY SOFTWARE



Monitor and manage devices to protect sensitive data, neutralise threats and keep your organisation secure.

FULLY RUGGED WARRANTY AS STANDARD INCLUDING ACCIDENTAL DAMAGE



3 Years Bumper-to-Bumper Warranty
A140 • F110 • F110-EX • K120 • K120-EX • UX10 • UX10-EX • ZX10 • ZX10-EX • ZX80 • V110 • B360 • X600

3 Years Rugged Warranty
S410 • S510

EXTENDABLE WARRANTY TERM

Extend your standard warranty from 3 years Bumper-to-Bumper to 4 or 5 years.

EXTENDED DOCK WARRANTY

Extend your standard 3-year warranty on Getac-compatible Havis and Gamber-Johnson vehicle docks to 4 or 5 years.

With Getac carrying out authorised repairs, you get a simple & seamless support service.



www.getac.com

Copyright © 2025 Getac Technology Corporation and/or any of its affiliates. All Rights Reserved. Information provided herewith is for reference only, available specification shall be subjected to quotation by request.