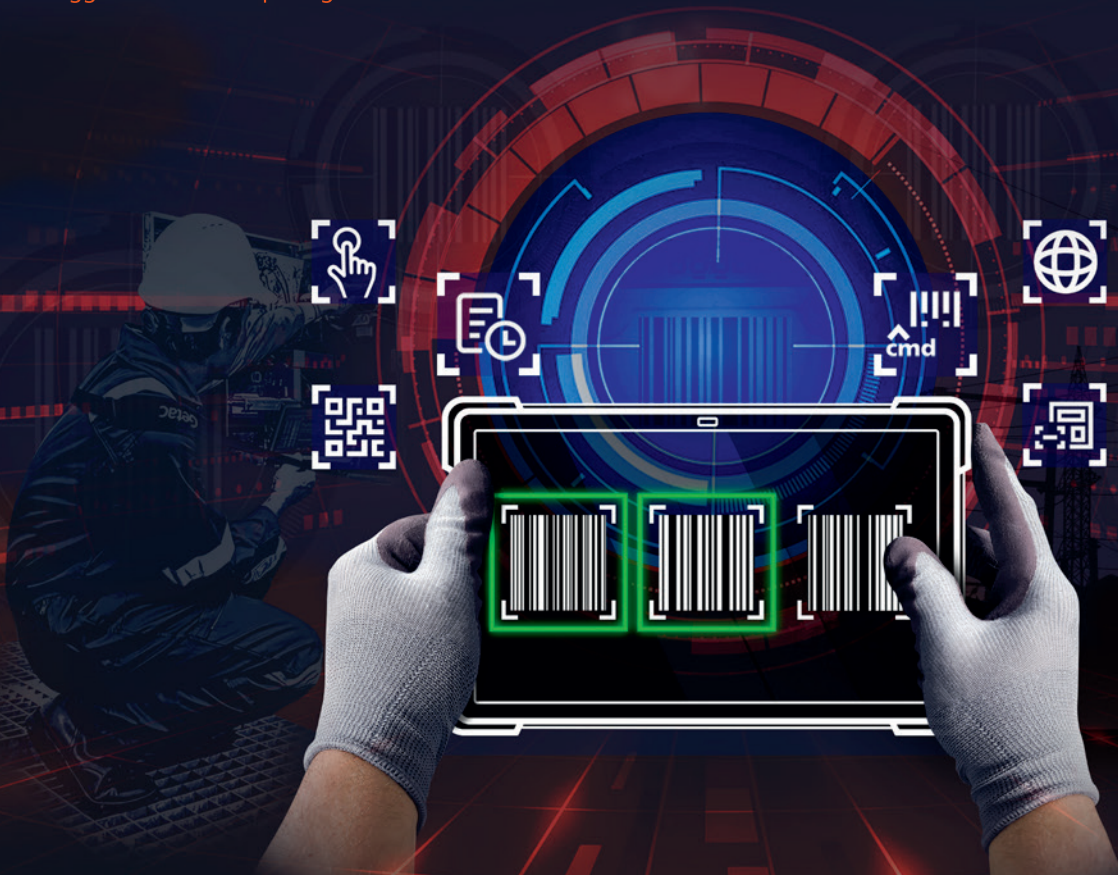


Getac

Rugged Mobile Computing Solutions



KeyWedge

One-Touch Scanning for Rugged Devices

Not all industry sectors require a high volume of barcode scanning and simply cannot justify the cost of integrated barcode reading hardware. Our software provides a low cost, easy to implement solution.

One download and you are ready to start scanning.



Configurable Solution

KeyWedge is highly configurable. The template scan mode even allows users to configure barcode templates to locate and scan label most efficiently.



Cost Effective

KeyWedge offers a cost-effective alternative to scan all major sets of 1D and 2D barcode symbology.



Seamless Integration

Fully integrated with all Getac devices equipped with a Rear Camera. Be truly mobile without the need for an additional hardware barcode scanner.

Expand the Capability to Boost Efficiency



KeyWedge provides single and multiple barcode scanning features, expanding the capability of any Getac Windows device with a rear camera. No hardware. No upgrades. No SDK (Software Development Kit) integration required. Simply install the app and you've got a one-touch rugged barcode scanner suitable for standard industrial field use, available on your Getac tablets or laptops.

Software Features



Dual Scan Triggers

Barcode scanning can be triggered in the software scan window or by assigning a hardware button.



Settings Share

Use Settings Share to quickly share current KeyWedge settings to other Getac devices with a simple scan. This feature can also be utilized for quickly switching scan settings while scanning.



Scan Mode

KeyWedge supports scan modes for multiple and continuous scans to match the input for different software use.



Scan History

Click on the scan history to keep track of a list of scanned items or reuse any scanned items for your software.



Change Setting via Command Line

Command line scripts can be used for one click setting changes.



Multiple Language Support

12 languages supported.

For a Wide Range of Applications and Getac Models



Public Safety

EMS: Ambulance/ePCR

- Patient ID scan
- Inventory Tracking



Utilities

Field Service

- Parts Tracking
- Asset Tracking



Transportation

Field Workers

- Passenger Handling
- Inventory Tracking

F110* , T800 , UX10 , V110*

*Support from F110G3, V110G3

F110* , K120 , T800 , UX10 , V110*

*Support from F110G3, V110G3

F110* , T800 , UX10 , V110*

*Support from F110G3, V110G3

Getac
Rugged Mobile Computing Solutions

Please contact your local Getac sales representative for further details on our Essentials Suite.

Copyright © 2024 Getac Technology Corporation and/or any of its affiliates. All Rights Reserved. Information provided herewith is for reference only, available specification shall be subjected to quotation by request. V01M09Y24 EN



www.getac.com