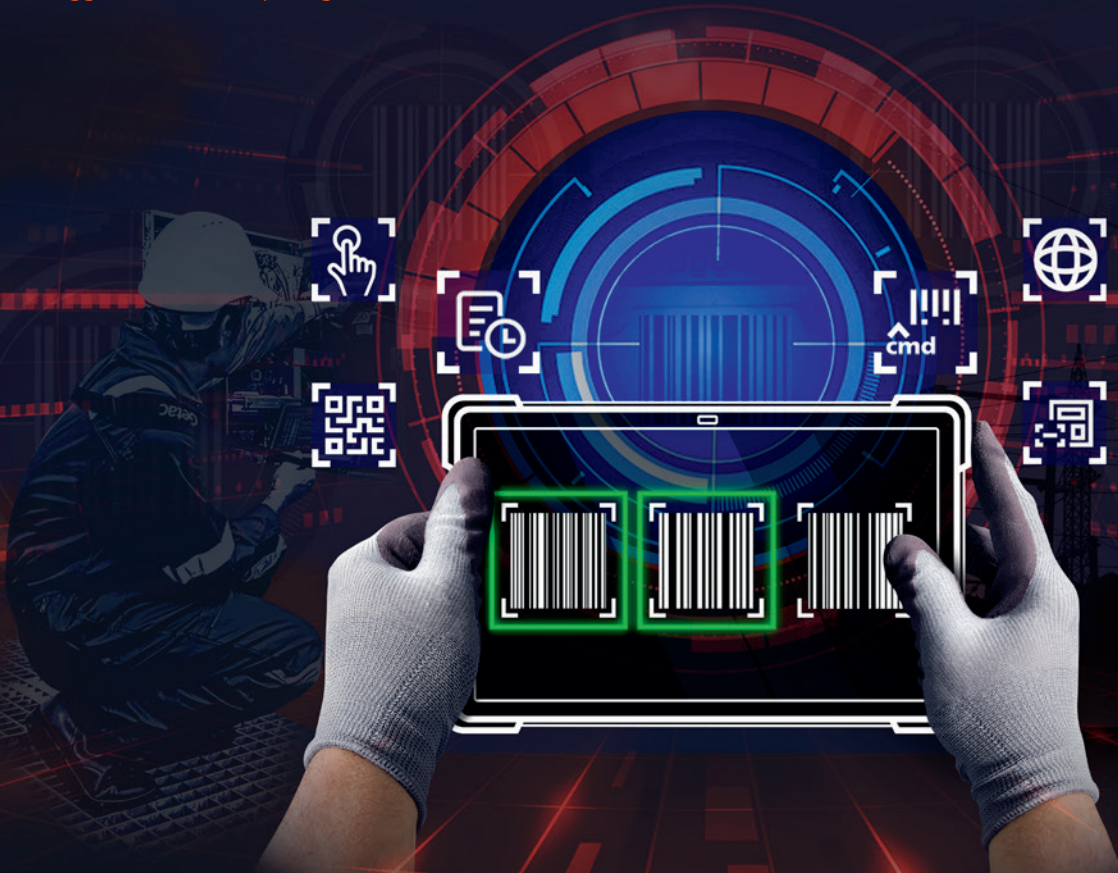


# Getac

Rugged Mobile Computing Solutions



## KeyWedge

### One-Touch Scanning for Rugged Devices

Not all industry sectors require a high volume of barcode scanning and simply cannot justify the cost of integrated barcode reading hardware. Our software provides a low cost, easy to implement solution.

One download and you are ready to start scanning.



#### Configurable Solution

KeyWedge is highly configurable. The template scan mode even allows users to configure barcode templates to locate and scan label most efficiently.



#### Cost Effective

KeyWedge offers a cost-effective alternative to scan all major sets of 1D and 2D barcode symbology.



#### Seamless Integration

Fully integrated with all Getac devices equipped with a Rear Camera. Be truly mobile without the need for an additional hardware barcode scanner.

# Expand the Capability to Boost Efficiency



KeyWedge provides single and multiple barcode scanning features, expanding the capability of any Getac Windows device with a rear camera. No hardware. No upgrades. No SDK (Software Development Kit) integration required. Simply install the app and you've got a one-touch rugged barcode scanner suitable for standard industrial field use, available on your Getac tablets or laptops.

## Software Features



### Dual Scan Triggers

Barcode scanning can be triggered in the software scan window or by assigning a hardware button.



### Settings Share

Use Settings Share to quickly share current KeyWedge settings to other Getac devices with a simple scan. This feature can also be utilised for quickly switching scan settings while scanning.



### Scan Mode

KeyWedge supports scan modes for multiple and continuous scans to match the input for different software use.



### Scan History

Click on the scan history to keep track of a list of scanned items or reuse any scanned items for your software.



### Change Setting via Command Line

Command line scripts can be used for one click setting changes.



### Multiple Language Support

12 languages supported.

## For a Wide Range of Applications and Getac Models



### Public Safety

EMS: Ambulance/ePCR

- Patient ID scan
- Inventory Tracking



### Utilities

Field Service

- Parts Tracking
- Asset Tracking



### Transportation

Field Workers

- Passenger Handling
- Inventory Tracking

### F110\* , UX10 , V110\*

\*Support from F110G3, V110G3

### F110\* , K120 , UX10 , V110\*

\*Support from F110G3, V110G3

### F110\* , UX10 , V110\*

\*Support from F110G3, V110G3

**Getac**  
Rugged Mobile Computing Solutions

Please contact your local Getac sales representative for further details on our Essentials Suite.

Copyright © 2024 Getac Technology Corporation and/or any of its affiliates. All Rights Reserved. Information provided herewith is for reference only, available specification shall be subjected to quotation by request.



[www.getac.com](http://www.getac.com)