



**GETAC  
SELECT**

# *Getac* **MATERIAL HANDLING**

**RUGGED. RELIABLE. RESPONSIVE.**



# SECURE YOUR ASSETS WITH A NAME YOU CAN TRUST

Gamber-Johnson is the global leader in equipment mounting products — driven by our mission of “*supporting technology to help save the world.*” We manufacture components and systems for every mounting solution, all meticulously designed to be **rugged, reliable, and responsive**. Gamber-Johnson is a trusted name in the industry; long known as the go-to partner for major rugged computer OEMs. As a pioneer in design innovation — receiving numerous awards and accolades as an industry leader — Gamber-Johnson has been the preferred choice for decades.

HARNESS THE POWER OF  
GAMBER-JOHNSON'S LASER-  
LIKE FOCUS ON INNOVATION  
WITH THE PERFECT MOUNTING  
SOLUTION FOR YOUR LIFT  
VEHICLE.







# MOUNTING SOLUTIONS FOR EVERY LIFT VEHICLE

Secure your tablets and equipment with our superior mounting solutions, for ultimate peace of mind. We offer a wide range of turnkey solutions that are configurable for your material handling vehicle's specific make and model. Our ergonomic solutions enhance driver efficiency, reduce installation time, speed up operations, and improve overall workplace safety. To narrow down the best solution for your fleet begin by asking yourself these four important questions:

## 1. WHAT DEVICE IS BEING MOUNTED?

Identifying your device ensures that you get the correct dock or cradle to support your specific need and desired connectivity.

## 2. WHAT MODEL VEHICLE IS THE DEVICE BEING MOUNTED TO?

Knowing the make and model of your vehicle will allow us to recommend the best location and corresponding product needed to mount your device.

## 3. WHAT IS THE VEHICLE'S VOLTAGE?

By knowing the voltage or power requirement of your lift vehicle we can ensure that you get the appropriate power supply for your specific need.

## 4. WHAT ACCESSORIES ARE BEING MOUNTED?

Understanding your accessory needs will allow us to build the best material handling solution for your team.



**GETAC  
SELECT**



# **CRADLES AND DOCKING STATIONS**

Secure your tablets and other devices with a Gamber-Johnson cradle or docking station. Cradles keep your device safe and secure without port access, while docking stations replicate the device's ports for easy and secure access. Either way — we have a solution that will meet your needs in the most secure, ergonomic configuration possible.

**RUGGED. RELIABLE. RESPONSIVE.**





## F110G6

### OPTIONS:

- Cradle, no RF
- Cradle, Tri RF
- Dock, no RF
- Dock, Tri RF
- Dock, Powered RS232, No RF
- Dock, Powered RS232, Tri RF

### FEATURES:

- Compatible with F110G6 tablet and all previous versions
- One-hand docking and release for efficient use all day long
- Downward-facing I/O ports; cable strain relief and cable management system
- Accommodates mag strip reader and hand strap without shoulder strap attachment (sold separately)
- Floating POGO pin style docking connector for reliable connectivity even in extreme environments
- Access to all tablet control buttons and ports while the tablet is docked
- Key lock (keyed alike) for theft deterrence
- Composite/aluminum design for reduced weight and durability
- VESA 75mm mounting pattern
- 3-Year Limited Warranty



## UX10

### OPTIONS:

- Cradle, no RF
- Cradle, Tri RF
- Dock, no RF
- Dock, Tri RF

### FEATURES:

- Designed for the Getac UX10 tablet computer
- Docking station design accommodates the rotating hand strap with the extended battery, or the optional hard handle, RFID reader, smart card reader, and mag stripe reader. (sold separately)
- Easy to use one-handed operation
- Downward-facing I/O ports; integrated cable strain relief and cable management system
- Floating POGO docking connector for reliable docking activation
- Docking tabs align tablet during insertion
- Key lock (keyed alike) for theft deterrence
- Rounded edges to enhance personal safety
- Gamber-Johnson rugged construction and reliability
- Composite/aluminum design for reduced weight and durability
- VESA 75 mounting pattern
- 3-Year Limited Warranty



## ZX70

### OPTIONS:

- Cradle
- Cradle, Powered (POGO connector)

### FEATURES:

- Designed for the Getac ZX70 tablet computer and backwards compatible with the Z710 tablet
- Easy to use one-handed operation
- POGO connector for reliable charging
- Power cable strain relief
- Docking station design accommodates rotating hand strap (sold separately)
- Access to all tablet control buttons and USB port while tablet is docked
- Key lock (keyed alike) for theft deterrence
- Rounded edges to enhance personal safety
- Gamber-Johnson rugged construction and reliability
- Extremely light-weight composite/aluminum design
- VESA 75 mounting pattern
- 3-Year Limited Warranty



## ZX10

### OPTIONS:

- Cradle, No RF
- Cradle, Tri RF
- KIT: Cradle, No RF (incl 120W Getac adapter)
- KIT: Cradle, Tri RF (incl 120W Getac adapter)
- Dock, No RF
- Dock, Tri RF

### FEATURES:

- Compatible with Getac ZX10 tablet computer
- Docking station accommodates the tablet's card reader, extended battery, hand strap, stylus, barcode reader, and hard carry handle
- Access to all tablet control buttons and ports while the tablet is docked
- Docking connector gasket provides additional water resistance and protection
- Downward-facing powered dual USB ports (1.5A ea); integrated cable restraint system
- Floating docking connector for reliable connectivity in rugged environments
- One-hand docking and release for efficient use all day long
- Key lock (keyed alike) for theft deterrence
- Gamber-Johnson rugged construction and reliability
- VESA 75mm mounting pattern
- 3-Year Limited Warranty



# OVERHEAD GUARD LEG MOUNTS

**RUGGED. RELIABLE. RESPONSIVE.**



## CLAM SHELLS

Our Clam Shell line is Gamber-Johnson's staple product when it comes to extending the usability of technology into the mobile world of material handling. Easily attach any device, dock, cradle, or interface plate with the multiple hole patterns featured on the product. Our Clam Shells work to tailor to individual operator comfort and safety by providing a wide range of adjustments for optimal viewing of a device, improved visibility, and proximity to the operator.



### 592GUK000048

Clam Shell with Small Backer Plate

### 590GBL000183

Clam Shell with Large Backer Plate

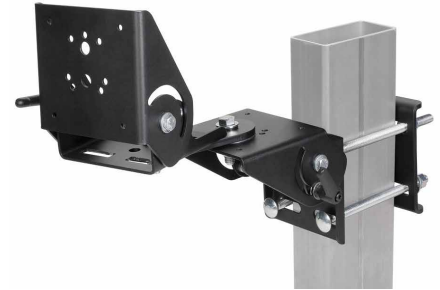


### 592GUK000021

Dual Clam Shell with Small Backer Plate

### 590GBL000052

Dual Clam Shell with Large Backer Plate



### 592GUK000013

Dual Clam Shell with Arm and Small Backer Plate

### 590GBL000045

Dual Clam Shell with Arm and Large Backer Plate



### 590GBL001263

Guard Leg Mount with Locking Swing Arm Mount



## CAB MOUNTS

Secure your valuable tablets and devices right in the cab of your material handling vehicle using one of our reliable OEM specific mounts. Perfectly suited to tailor your workspace to the most efficient, ergonomic, and secure configuration, all while protecting your valuable assets and lift vehicle operators.



**590GBL000773**  
Toyota Cab Latch Mount for  
Electronic Hydraulics



**590GBL000774**  
Toyota Cab Mount



**590GBL000161**  
Clamp Bracket Adapter



**590GBL001264**  
Linde E30 Latch Mounting Bracket



**590GBL001265**  
Yale Hyster 40/70 Cab Mount



**590GBL000322**  
Yale/Hyster Electric Bracket

## HORIZONTAL EXTENSION

Increase your usable mounting space with our horizontal extension giving you more room to mount a total solution. Compatible with all Gamber-Johnson's roll formed and tube clamp brackets to ensure secure fitment to any overhead guard leg profile.



**590GBL000651**  
Horizontal Extension Bar



## TUBE CLAMP MOUNTS

Expand your mounting location options by connecting your solution to multiple sizes of cylindrical poles, handles, or tubular style overhead guard legs. Adapt a Clam Shell product to finalize the total solution.



**592GUK000023**  
2", 2.5", 3" Diameter Tube Clamp



**590GBL000388**  
Zirkona 2" to 3" Pole Mount with VESA 75mm Mounting Plate

**590GBL001266**  
Zirkona 2" to 3" Pole Mount with AMPS/NEC Mounting Plate



**590GBL000389**  
Zirkona 3/4" to 1 7/8" Pole Mount with VESA 75mm Mounting Plate

**590GBL001267**  
Zirkona 3/4" to 1-7/8" Pole Mount with AMPS/NEC Mounting Plate

## ROLL FORM BRACKETS

We have the ideal products for every mounting situation; including lift vehicles that have roll formed overhead guard legs. These brackets conform perfectly to various roll formed profiles ultimately creating a solid foundation to adapt our Clam Shell product line.



**592GUK000020**  
For Yale/Hyster, Crown, and others

**590GBL001268**  
For CLARK

**590GBL000130**  
For Jungheinrich / CAT / Toyota

**590GBL000193**  
For Linde Models EV-30 and EV40

## Zirkona DIAMOND PLATE MOUNTS

When it comes to mounting lightweight devices turn to Gamber-Johnson's diamond plate mounts for a reliable solution. Multiple product offerings to interface your device with various hole patterns and ample adjustability to accommodate operator comfort and ease of use.



**590GBL001269**  
Zirkona 4" Diamond Plate with Large Joiner and AMPS/NEC Plate

**590GBL000326**  
Zirkona 4" Diamond Plate with Large Joiner and VESA 75mm Plate



# OVERHEAD GUARD MOUNTS

Increase your operator's forward visibility by tucking your device up and out of the way. Directly mount from the overhead guard using various ergonomic options that best fit a wide variety of operator needs and preferences.

**RUGGED. RELIABLE. RESPONSIVE.**





**590GBL000651**  
Tall Adjustable Overhead Guard Bar



**590GBL000046**  
Vertical Extension Bar



**590GBL000231**  
Short Overhead Bar Mount



**590GBL000333**  
Tall Overhead Bar Mount



# **PERIPHERAL MOUNTS**

**RUGGED. RELIABLE. RESPONSIVE.**



## POWER SUPPLIES, WIRING KITS & MOUNTS

Protect and power your valuable devices by pairing them with a clean, stable power source to guarantee functionality and longevity. Combine with a Gamber-Johnson Wiring Kit and Power Supply Mount for a professional look and quick installation.



### Lind Isolated Power Supply

- 592GUK000016** • 12-32Vdc input voltage
- 592GUK000017** • 20-60Vdc input voltage
- 592GUK000018** • 72-110Vdc input voltage
- 442879100016** • 12-32Vdc input voltage (ZX70 only)
- 442879100017** • 20-60Vdc input voltage (ZX70 only)



**590GBL000513**  
Wiring Kit



**590GBL000327**  
Power Supply Clamp



**590GBL001270**  
Wire Harness - 2.5mm DC Power Plug with 10 amp In-line Fuse

## KEYBOARD MOUNTS

Configure your keyboard for ultimate ease of use and the fastest possible access with our large selection of Keyboard Mounts. With an ergonomic angle that meets user needs, working on the keyboard in the field can be more streamlined and reliable than ever before.



**591GUS000016**  
Tablet Keyboard Mount



**590GBL000876**  
Vertical Tablet Keyboard Mount



**590GBL000073**  
Low Profile Tablet Keyboard Bracket



**590GBL000650**  
Number Pad Bracket



**590GBL000608**  
Rugged Lite Keyboard



## HANDHELD SCANNER MOUNTS

Safeguard handheld scanners from accidental drops and catastrophic damage by housing your device with the right mount to fit your operation's needs.



**590GBL001271**  
Pistol Grip Scanner Bracket

**590GBL001280**  
Zirkona, Pistol Grip Scanner Mount



**590GBL001272**  
Flat Surface Magnet Mount with  
Scanner Holder



**590GBL000387**  
Scanner Pocket Tablet Mount



**590GBL001273**  
Scanner Pocket Mount with Small Back Plate

## SAFETY LIGHT MOUNTS

Mount safety lights to present a visual alert to help increase warehouse safety, minimize the risk of accidents, and improve visible awareness of approaching lift vehicles.



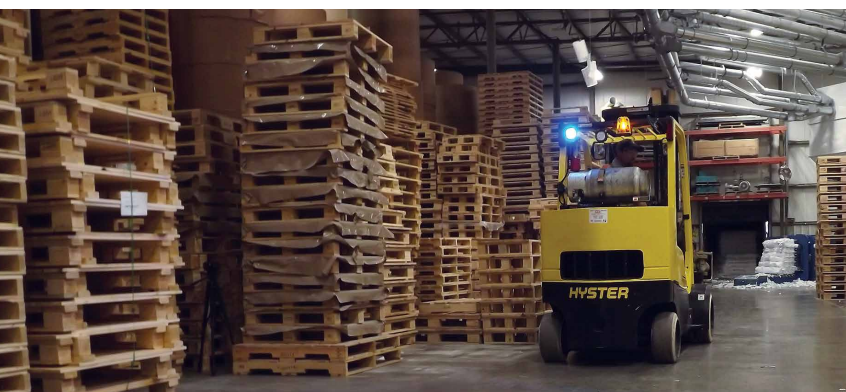
**590GBL001274**  
Single Light Bracket



**590GBL001275**  
TYRI Redline Light Mount



**590GBL001276**  
Forklift Light Mount



Explore our full  
assortment of material  
handling mounts at  
**GAMBERJOHNSON.COM**



## PRINTER MOUNTS

Continue to expand from a desk to a mobile work environment by creating a secure and accessible way to mount rugged mobile printers.



**590GBL001277**  
Datamax O'Neil RL4 Printer Bracket  
\*See website for full assortment



**590GBL001278**  
Zebra ZQ630/QLN420 Printer Bracket



**590GBL001279**  
Zebra ZQ620 Printer Bracket

## PROTECTIVE COVERS

Encase your device with Gamber-Johnson's patented selection of thermal and non-thermal protective covers. Designed to keep your device safe from the harsh elements in unforgiving work environments that could prematurely destroy your assets.



**590GBL000216** - 8" Protective Cover  
**590GBL000172** - 10" Protective Cover  
**590GBL000074** - 8" Thermal Protective Cover  
**590GBL000217** - 10" Thermal Protective Cover



## READY TO MAKE A PURCHASE?

Contact your regional Getac Sales Representative via our website:

[www.getac.com](http://www.getac.com)



[WWW.GAMBERJOHNSON.COM](http://WWW.GAMBERJOHNSON.COM)

5001 Joerns Drive, Stevens Point, WI 54481, U.S.A.  
800.487.9220 | [sales@gamberjohnson.com](mailto:sales@gamberjohnson.com)



GETAC  
SELECT

[getac.com](http://getac.com)